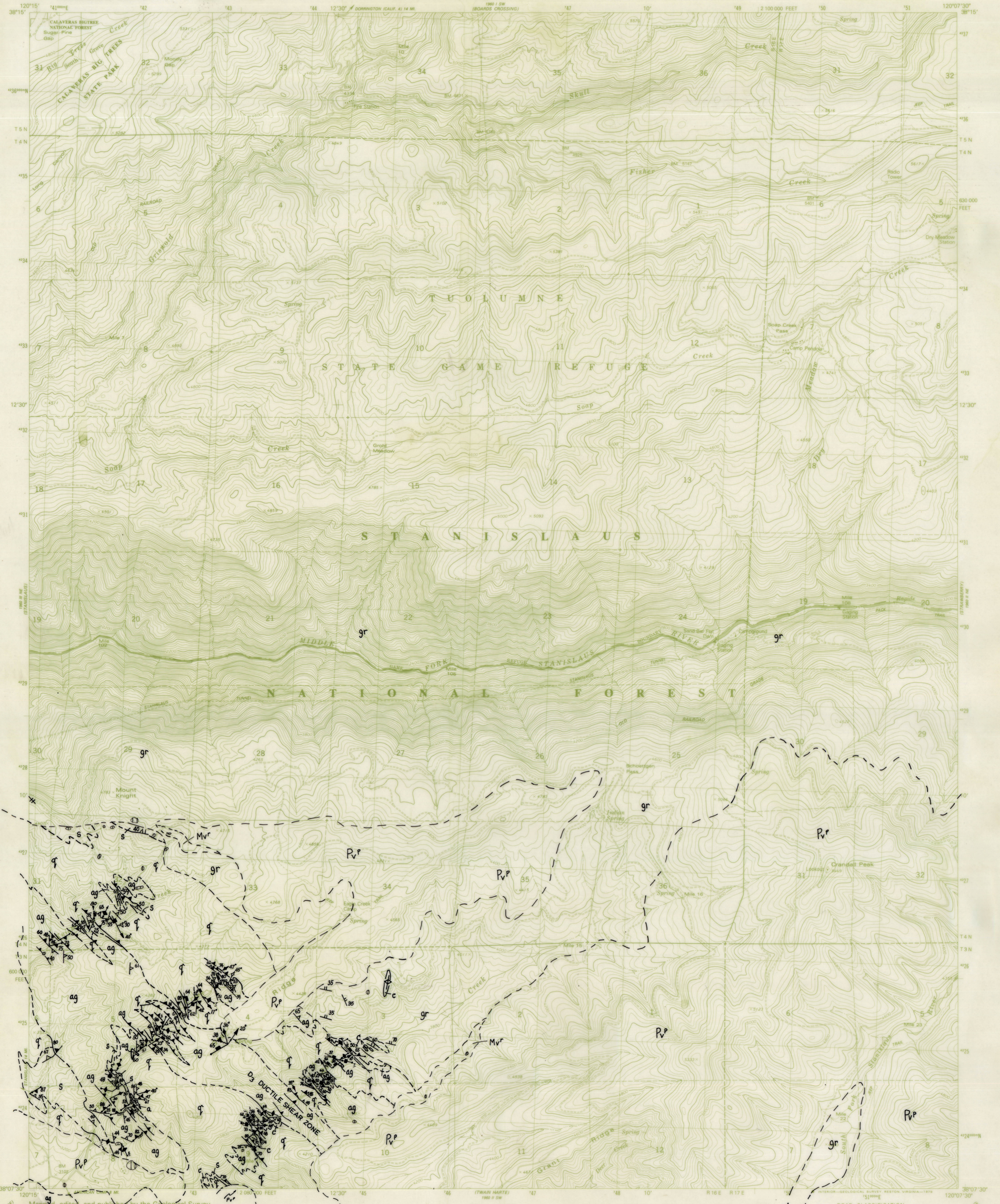




1:250,000
Library Map



Mapped, edited, and published by the Geological Survey
Control by USGS and NOS/NOAA
Topography by photogrammetric methods from aerial
photographs taken 1973. Field checked 1974
Map edited 1979

Projection and 10,000-foot grid ticks: California coordinate
system, zone 3 (Lambert conformal conic)
1000-meter Universal Transverse Mercator grid, zone 10
1927 North American Datum
To place on the predicted North American Datum 1983
move the projection lines 12 meters north and
89 meters east as shown by dashed corner ticks
Where omitted land lines have not been established
There may be private inholdings within the boundaries of
the National or State reservations shown on this map

UTM GRID AND 1979 MAGNETIC NORTH
DECLINATION AT CENTER OF SHEET

SCALE 1:24 000
1000 0 1000 2000 3000 4000 5000 6000 7000 FEET
1 5 10 15 20 25 30 35 40 KILOMETER
CONTOUR INTERVAL 40 FEET
NATIONAL GEODETIC VERTICAL DATUM OF 1929

ROAD CLASSIFICATION
Primary highway, hard surface
Secondary highway, hard surface
Light-duty road, hard or improved surface
Unimproved road

Interstate Route U. S. Route State Route



CRANDALL PEAK, CALIF.

NW 4 LONG BARR 15' QUADRANGLE
N3807.5-W12007.5/7.5

1979

DMA 1980 II NW-SERIES 5885

THIS MAP COMPLIES WITH NATIONAL MAP ACCURACY STANDARDS
FOR SALE BY U. S. GEOLOGICAL SURVEY, DENVER, COLORADO 80225, OR RESTON, VIRGINIA 22092
A FOLDER DESCRIBING TOPOGRAPHIC MAPS AND SYMBOLS IS AVAILABLE ON REQUEST

5076-25-10